



# Rate Schedule '19

proud member of the SIMAMA HOTEL group

## CORPORATE ACCOMODATION RATE SCHEDULE 2019

All rates are inclusive of: Breakfast served in the Bistro Restaurant from 07:00am – 10:00am daily. All our rooms have; Airconditioning and Heating, Tea and Coffee Facilities, selected DSTV channels, Mini-Bar Fridge (Stocked on request) and complimentary WiFi Internet Access and Patio or Terrace areas, The Bar and Restaurant are open until 21:00pm daily, Secure onsite Parking and next-day Laundry Service available.

STANDARD SUITE Single Occupancy	STANDARD SUITE Two People Sharing	LUXURY SUITE Single Occupancy	LUXURY SUITE Two People Sharing	EXECUTIVE APARTMENT Single Occupancy	EXECUTIVE APARTMENT Two People Sharing
<b>R 1140.00</b> (Inclusive of Full English Breakfast)	<b>R 1390.00</b> (Inclusive of Full English Breakfast)	<b>R 1280.00</b> (Inclusive of Full English Breakfast)	<b>R 1540.00</b> (Inclusive of Full English Breakfast)	<b>R 1650.00</b> (Inclusive of Full English Breakfast)	<b>R 1800.00</b> (Inclusive of Full English Breakfast)

\*Dinner (pre-paid option) is R250 p.p .and includes a two course dinner and a soft drink\*

## MEETING SCHEDULE 2018

HALF DAY MEETING	FULL DAY MEETING
<b>R 365.00</b> (Inclusive of Luncheon) Standard Conference Venue	<b>R 475.00</b> (Inclusive of Luncheon) Standard Conference Venue

## MEETING PACKAGE

- Welcome, Morning and Afternoon coffee/tea breaks, including freshly brewed coffee, tea and fresh fruit juices, including a selection of accompaniments.
- Set lunch menu inclusive of a soft drink served in on our terrace overlooking the gardens or in our dining room.
- Meeting room setup, conference stationery, filtered water (bottled water provided on request) and mints.
- Standard audio visual equipment including screen, digital projector, flipchart with paper and pens. Other audio visual equipment provided and quoted on request.
- Free secure parking facilities for meeting delegates
- Free internet access to all delegates via Wi-Fi.

## WORKING LUNCH MENUS

Sandton Lodge Rivonia hosts a variety of meals for its conference delegates including meals for specific diets, such as vegetarian, Halaal and Kosher. Halaal and Kosher meals will be at an additional cost. Our lunch includes variety of soup/salads a choice of two main courses and dessert. Additional beverages and alcoholic beverages will be charged on a consumption basis.

## SELF-CATERING - MONTHLY RATE SCHEDULE 2019

### Standard Self Catering Unit

No garden, Ground Floor, Serviced Daily  
50% Discount on In-house Laundry Service **R 17500.00** including breakfast; **R20 050.00**

### Luxury Self Catering Unit

Private garden, Ground Floor, Serviced Daily  
50% Discount on In-house Laundry Service **R 21500.00** including breakfast; **R24 050.00**

### Luxury Apartment Self Catering

Private Patio, Balcony, Third Floor  
Fully equipped with Laundry appliances **R 27 500.00** including breakfast; **R30 050.00**

Sandton Lodge Rivonia / Silifa Investments  
Corner of 12th Avenue and River Road, RIVONIA  
(No 143, 12th Avenue, EDENBURG on GPS)



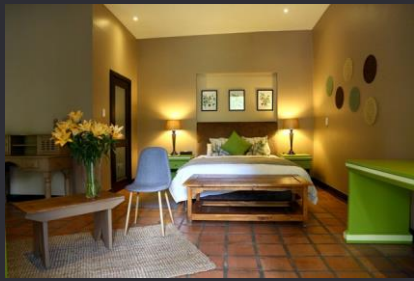
WWW.SANDTONLODGE.COM

Sandton Lodge sandtonlodgerivonia

Tel: +27 (011) 234 8713/4/5/6  
Fax: +27 (011) 234 9053

Reservations: stay@sandtonlodge.com  
Accounts: accounts@sandtonlodge.com  
General Manager: cindy@sandtonlodge.com

Co Reg No: CK2006/213345/23  
Vat no: 4510272307



## SANDTON LODGE RIVONIA (HOTEL)

Sandton Lodge Rivonia offers a relaxed “home-from-home” environment for the business traveller or for families looking for a more personal space. Enjoy this uniquely tranquil experience right in the heart of Sandton in the lush green cosmopolitan suburb of Rivonia, with easy access to highways and transport hubs.

**We strive to provide the highest level of hospitality, service excellence and professionalism in an environment which is always private, tranquil and offers unsurpassed comfort.**

### Our services and facilities include:

- 32 Suites comprised of (02 Self Catering Units, 01 Executive Apartment, Standard and Luxury Suites)
- Accommodating a maximum of 64 Pax
- Select DSTV & SABC Channels, Flat Screen TV, Air- Conditioning and in-suite Tea and Coffee facilities all Suites have either Private Balcony or Patio’s overlooking our vast gardens.
- Complimentary WiFi Access in all Guest Rooms and Public Areas
- Large Swimming Pool, Public Lounge Area and secure onsite parking
- Bistro Restaurant offering; Buffet Breakfast and an A-la-Carte Lunch and Dinner Menu  
Room Service available from 07:00am – 21:30pm from Monday to Friday.
- Licenced Local Bar
- Guest Laundry, Ironing and Dry-Cleaning services available

### Introducing our onsite SHEAR DELIGHT BOUTIQUE SALON



Join Carlo and his team at the Shear Delight Salon which offers a full spectrum of quality professional hairdressing and grooming services for men, women and children; delivered by a team of highly skilled and well-trained stylists.

### CONFERENCE FACILITIES

- Welcome, Morning and Afternoon coffee/tea breaks, including freshly brewed coffee, tea and fresh fruit juices, including a selection of accompaniments.
- Set lunch menu inclusive of a soft drink served in on our terrace overlooking the gardens and swimming pool or in our dining room.
- Meeting room setup, conference stationery, filtered water (bottled water provided on request) and sweets.
- Standard audio visual equipment including screen, digital projector, flipcharts with paper, pads and pens. Other audio visual equipment provided and quoted on request.
- Free secure parking facilities for meeting delegates
- Free internet access to all delegates via Wi-Fi.

### WORKING LUNCH MENUS

Sandton Lodge Rivonia hosts a variety of meals for its conference delegates including meals for specific diets, such as vegetarian, Halaal and Kosher. Halaal and Kosher meals will be at an additional cost. Our lunch includes variety of soup/ salads a choice of two main courses and dessert. Additional beverages and alcoholic beverages will be charged on a consumption basis.

### VENUES

King & Queen Protea Venue	50 Delegates Maximum	U-Shape	School Room	Half-Moon Round
Mowana Venue	20 Delegates Maximum	U-Shape	School Room	
Rooibos Venue	12 Delegates Maximum	U-Shape	School Room	
Fynbos Venue	15 Delegates Maximum	U-Shape	School Room	
Sterlitzia Venue	12 Delegates Maximum	U-Shape	School Room	

**Sandton Lodge Rivonia / Silifa Investments**  
Corner of 12th Avenue and River Road, RIVONIA  
(No 143, 12th Avenue, EDENBURG on GPS)



[WWW.SANDTONLODGE.COM](http://WWW.SANDTONLODGE.COM)

Sandton Lodge sandtonlodgerivonia

Tel: +27 (011) 234 8713/4/5/6  
Fax: +27 (011) 234 9053  
Fax2Email: 086 5910781

Reservations: stay@sandtonlodge.com  
Accounts: accounts@sandtonlodge.com  
General Manager: cindy@sandtonlodge.com

Co Reg No: CK2006/213345/23  
Vat no: 4510272307

# fact sheet

proud member of the SIMAMA HOTEL group